

Net up-counts for Corby counter, River Eden

Notes

Data is all trace-verified wherever possible

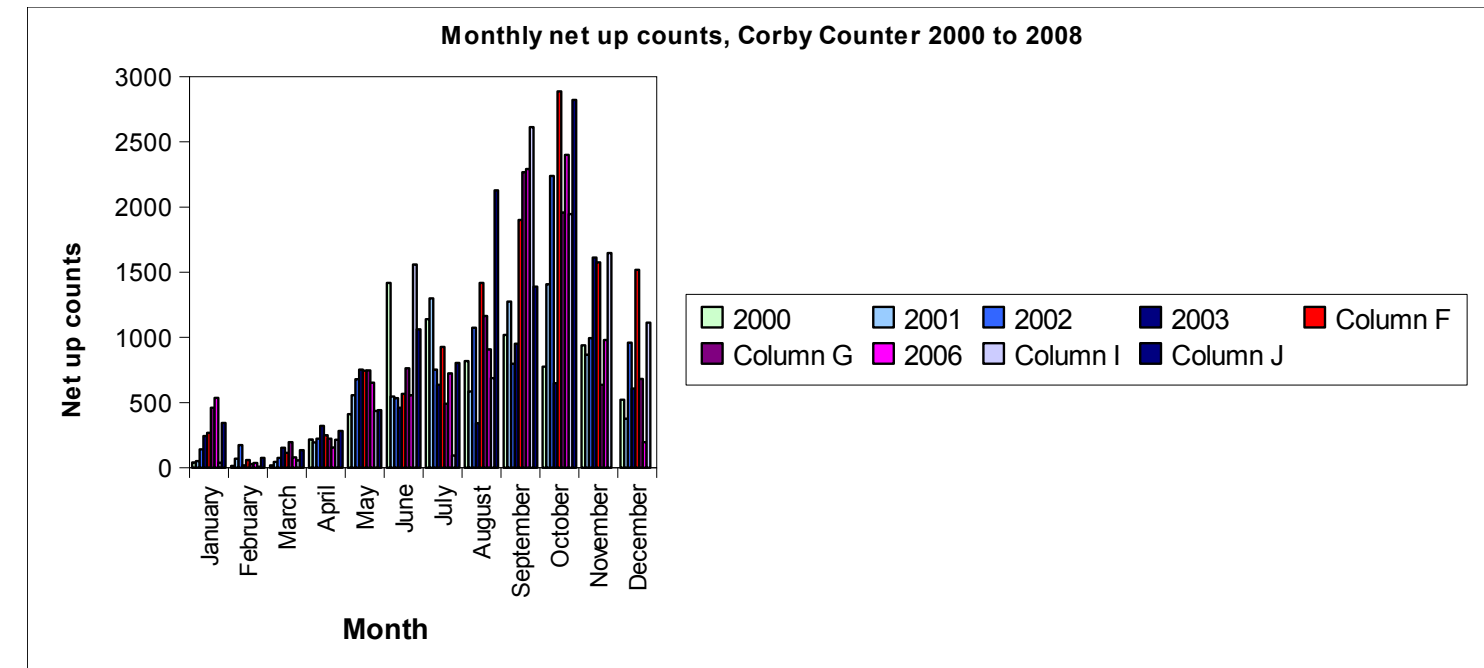
Validation work suggests that a minimum of 2.5% of fish are missed by the counter (validated at low flows)

Counts are not species specific, therefore include salmon, sea trout, brown trout, sea lamprey etc.

Month	Net up count									% annual total							
	2000	2001	2002	2003	2004	2005	2006	2007	2008	2000	2001	2002	2003	2004	2005	2006	2007
January	41	51	142	243	267	460	536	38	343	0.6%	0.7%	1.6%	3.6%	2.2%	4.8%	5.6%	0.4%
February	15	70	174	19	60	28	37	8	75	0.2%	1.0%	2.0%	0.3%	0.5%	0.3%	0.4%	0.1%
March	19	44	75	153	115	197	79	57	134	0.3%	0.6%	0.9%	2.3%	0.9%	2.0%	0.8%	0.5%
April	217	194	223	322	250	222	155	214	282	3.0%	2.7%	2.6%	4.8%	2.0%	2.3%	1.6%	2.1%
May	411	556	680	752	744	746	652	435	442	5.6%	7.6%	7.9%	11.1%	6.1%	7.8%	6.9%	4.2%
June	1417	546	534	460	566	763	556	1559	1061	19.3%	7.5%	6.2%	6.8%	4.6%	7.9%	5.8%	15.0%
July	1140	1300	752	636	927	490	725	95	805	15.5%	17.9%	8.7%	9.4%	7.6%	5.1%	7.6%	0.9%
August	818	586	1074	341	1419	1165	908	687	2128	11.2%	8.1%	12.4%	5.1%	11.6%	12.1%	9.5%	6.6%
September	1019	1275	797	952	1902	2267	2291	2614	1389	13.9%	17.5%	9.2%	14.1%	15.6%	23.6%	24.1%	25.1%
October	775	1408	2238	649	2887	1958	2401	1945	2822	10.6%	19.4%	25.9%	9.6%	23.6%	20.4%	25.2%	18.7%
November	940	868	994	1613	1575	636	980	1647		12.8%	11.9%	11.5%	23.9%	12.9%	6.6%	10.3%	15.8%
December	522	376	960	607	1518	682	196	1113		7.1%	5.2%	11.1%	9.0%	12.4%	7.1%	2.1%	10.7%

Annual totals - season year of Feb to Jan is a better measure of run size

Year	2000	2001	2002	2003	2004	2005	2006	2007
Calendar year (Jan to Dec)	7334	7274	8643	6747	12230	9614	9516	10412
Season year (Feb to Jan)	7344	7365	8744	6771	12423	9690	9018	10717



Spring comparison

February to May

Year	2000	2001	2002	2003	2004	2005	2006	2007	2008
Net up count	662	864	1152	1246	1169	1193	923	714	933

